



CATEGORY
**ELECTRICAL
BOXES**

AMMO ITEM #

AR177

Company: _____

Job: _____ #Item: _____

Notes: _____

4" Octagon Box, Drawn, 2-1/8" Deep with NMSC Clamps and "TS" Bracket



FEATURE BENEFIT

Octagon boxes are used in the installation of ceiling or wall lighting fixtures

MATERIAL

Steel

PRODUCT FEATURES

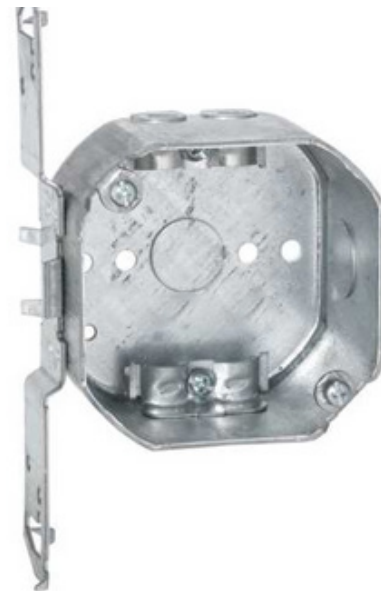
- Drawn steel construction with "TS" side-mount bracket and L clamps for nonmetallic sheathed cable
- Supplied with two 1/2 In. knockouts
- Combination Phillips/slotted screw heads
- 21.5 Cu. In. capacity

PRODUCT SPECIFICATIONS

- Length/Depth (in.): _____ 2.188
- Width (in.): _____ 3.875
- Height (in.): _____ 7.000
- Wt. Ea. (Lbs.): _____ 0.796
- Package Type: _____ Loose
- Product UPC-A Labeled: _____ No

PACKAGING

- PKG: _____ 25
- UPC Number: _____ 837654087428



ELECTRICAL BOXES & COVERS



400 MARTIN LUTHER KING JR WAY, BRIDGETON, NJ 08302
PHONE : (718).338.1851 FAX : (718).228.1851
orders@ammoelectric.com

www.ammoelectric.com