



CATEGORY
**ELECTRICAL
BOXES**

AMMO ITEM #

AR262

Company: _____

Job: _____ #Item: _____

Notes: _____

4-11/16" Square Drawn Boxes 2-1/8" Deep & Amp, Extension Rings With Conduit KO's



APPLICATIONS

- 411/16' Boxes are used for a wide variety of industrial applications where larger sized conductors or wiring devices are needed and more volume is required
- Drawn boxes are ideal for exposed work applications (surface mounted wiring)
- Extension rings provide a means for adding cubic capacity or as an outlet box for surface conduit

PRODUCT FEATURES

- Combination screw heads provide for faster installation
- EKO knockouts allow for design and installation flexibility
- Material: Steel

GENERAL PRODUCT INFORMATION

Wiring System: Conduit

CONFIGURATION

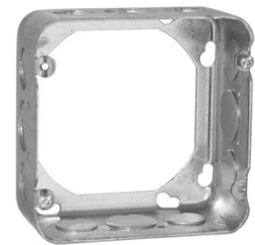
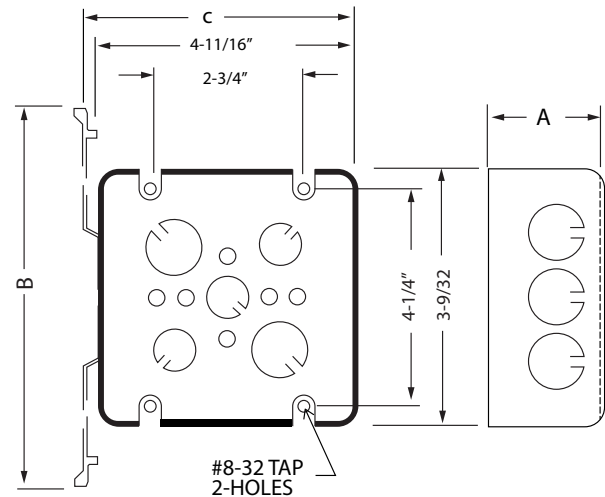
- Bracket Type: _____ No Bracket
- Drawn or Welded: _____ Drawn
- Side Knockout(s): _____ (8) 1/2 in. & (4) 3/4 in.

DRAWING DIMENSIONS

Dimension A: _____ 2-1/8 in.

PRODUCT MEASUREMENTS

- Depth: _____ 2-1/8 in.
- Cubic Inches: _____ 42.0
- Wt. Ea. (Lbs.): _____ 0.776
- Product Length (in.): _____ 2.19
- Product Width (in.): _____ 4.69
- Product Height (in.): _____ 4.69



PACKAGING

- PKG: _____ 24
- UPC Number: _____ 837654071298

ELECTRICAL BOXES & COVERS



400 MARTIN LUTHER KING JR WAY, BRIDGETON, NJ 08302
PHONE : (718).338.1851 FAX : (718).228.1851
orders@ammoelectric.com

www.ammoelectric.com