



CATEGORY

WEATHERPROOF

AMMO ITEM #

AR2C-GD

Company: \_\_\_\_\_

Job: \_\_\_\_\_ #Item: \_\_\_\_\_

Notes: \_\_\_\_\_

# Device Cover Duplex, GFCI



## APPLICATION

Covers for cast metal flush device boxes suitable for use in wet locations

## FEATURE

Include lugs, closure plugs ground screw

## MATERIAL

- Cover plate: die cast zinc
- Cover: die cast zinc
- Spring: formed spring steel

## FINISH

Gray

## CERTIFICATION

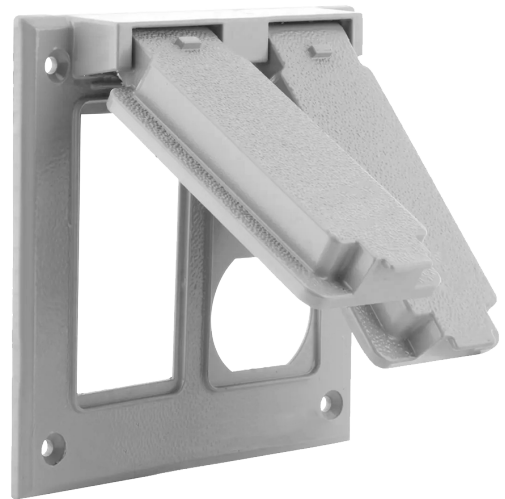
UL Standard: 514

## CONFIGURATION

- Gang: \_\_\_\_\_ 2
- GFCI: \_\_\_\_\_ 1
- Duplex: \_\_\_\_\_ 1

## PACKAGING

- Weight: \_\_\_\_\_ 264 g
- PKG: \_\_\_\_\_ 50
- UPC number: \_\_\_\_\_ 837654071199



WEATHERPROOF



400 MARTIN LUTHER KING JR WAY, BRIDGETON, NJ 08302  
PHONE : (718).338.1851 FAX : (718).228.1851  
orders@ammoelectric.com

www.ammoelectric.com