



CATEGORY
**ELECTRICAL
 BOXES**

AMMO ITEM #

AR692

Company: _____

Job: _____ #Item: _____

Notes: _____

Masonry Boxes, 2-1/2" Deep Nongangable with Conduit KO's 3-Gang, 5-19/32" Width



APPLICATIONS

Masonry boxes are designed to accommodate the mounting of switches or other devices in masonry walls 2-1/2' deep boxes are used in 4' block walls, 3-1/2' deep boxes are used in 6' or 8' block walls

PRODUCT FEATURES

- Rugged welded design does not fall apart during construction
- Available from one to six gang configurations in both 2-1/2' and 3-1/2' depths
- Rectangular shape fits square cuts in block
- Large volume design allows for additional work room inside the box
- Standard 1/2' and 3/4' concentric knockouts
- Device ears inside the box prevent mortar from getting in the device holes
- Steel voltage partition #971 fits all 2-1/2' or 3-1/2' depths
- Standard wall plates can be used

GENERAL PRODUCT INFORMATION

Wiring System: Conduit

CONFIGURATION

- End Knockouts: _____ 6 Conc.
- Drawn or Welded: _____ Welded
- Gangs: _____ 3
- Side Knockout(s): _____ 6 Conc.
- Bottom Knockouts(s): _____ 3 Conc.

DRAWING DIMENSIONS

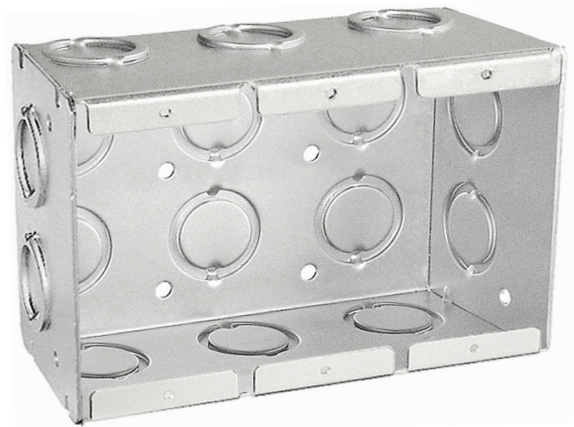
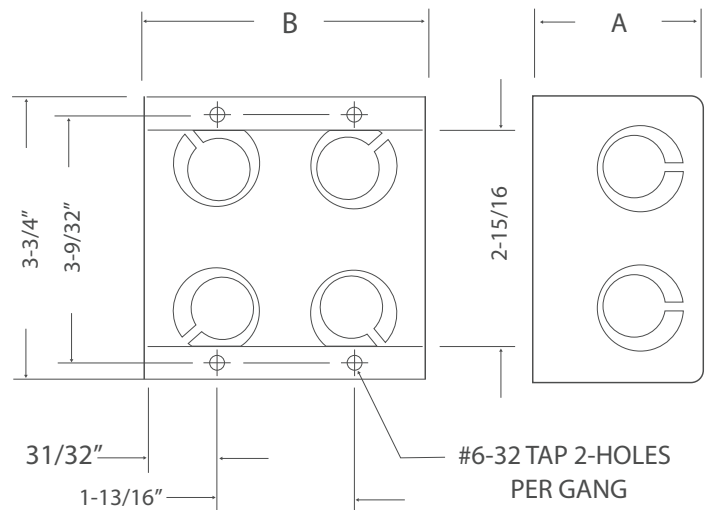
- Dimension A: _____ 2-1/2 in.
- Dimension B: _____ 5-19/32 in.

PRODUCT MEASUREMENTS

- Depth: _____ 2-1/2 in.
- Cubic Inches (cm3): _____ 47.8 (783.3)
- Wt. Ea. (Lbs.): _____ 1.250
- Product Length (in.): _____ 2.50
- Product Width (in.): _____ 3.75
- Product Height (in.): _____ 5.59

PACKAGING

- PKG.: _____ 10
- Product UPC-A Labeled: No
- Weight (Lbs. Per/C): _____ 125.00
- Ship Carton Length (in.): 11.25
- Ship Carton Width (in.): 8.50
- Ship Carton Height (in.): 8.50
- Ctn Weight (Lbs.): _____ 12.50
- Pallet Qty: _____ 1000
- UPC Number: _____ 837654073001



ELECTRICAL BOXES & COVERS



400 MARTIN LUTHER KING JR WAY, BRIDGETON, NJ 08302
 PHONE : (718).338.1851 FAX : (718).228.1851
 orders@ammoelectric.com

www.ammoelectric.com