



CATEGORY
**ELECTRICAL
BOXES**

AMMO ITEM #

AR693

Company: _____

Job: _____ #Item: _____

Notes: _____

Masonry Boxes, 2-1/2" Deep Nongangable with Conduit KO's



APPLICATIONS

- Masonry boxes are designed to accommodate the mounting of switches or other devices in masonry walls
- 2-1/2' deep boxes are used in 4' block walls, 3-1/2' deep boxes are used in 6' or 8' block walls

PRODUCT FEATURES

- Rugged welded design does not fall apart during construction.
- Available from one to six gang configurations in both 2-1/2' and 3-1/2' depths
- Rectangular shape fits square cuts in block
- Large volume design allows for additional work room inside the box
- Standard 1/2' and 3/4' concentric knockouts
- Device ears inside the box prevent mortar from getting in the device holes
- Steel voltage partition #971 fits all 2-1/2' or 3-1/2' depths
- Standard wall plates can be used
- Material: Steel

GENERAL PRODUCT INFORMATION

Wiring System: _____ Conduit

CONFIGURATION

- End Knockouts: _____ 8 Conc.
- Drawn or Welded: _____ Welded
- Gangs: _____ 4
- Side Knockout(s): _____ 7 Conc.
- Bottom Knockout(s): _____ 4 Conc.

DRAWING DIMENSIONS

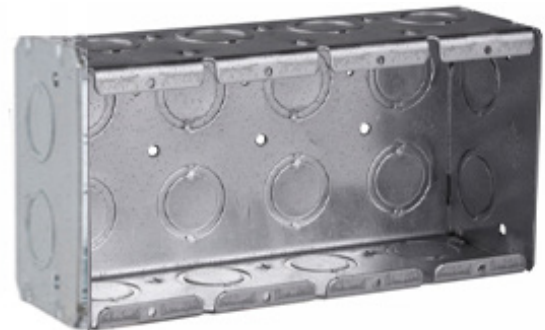
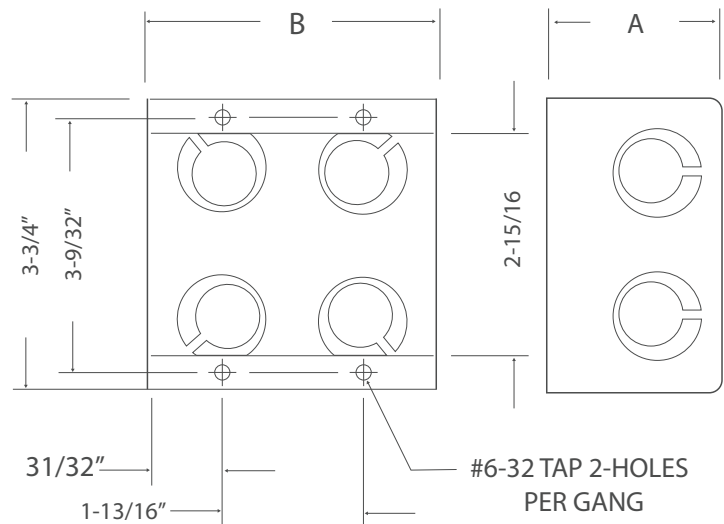
- Dimension A: _____ 2-1/2 in.
- Dimension B: _____ 7-13/32 in.

PRODUCT MEASUREMENTS

- Depth: _____ 2-1/2 in.
- Cubic Inches (cm3): _____ 63.5 (1040.5)
- Wt. Ea. (Lbs.): _____ 1.581
- Product Length (in.): _____ 2.50
- Product Width (in.): _____ 3.75
- Product Height (in.): _____ 7.41

PACKAGING

- PKG: _____ 10
- Product UPC-A Labeled: _____ No
- Weight (Lbs. Per/C): _____ 158.10
- Ship Carton Length (in.): _____ 11.38
- Ship Carton Width (in.): _____ 8.25
- Ship Carton Height (in.): _____ 10.63
- Ctn Weight (Lbs.): _____ 15.81
- Pallet Qty: _____ 800
- UPC Number: _____ 837654073018



ELECTRICAL BOXES & COVERS



400 MARTIN LUTHER KING JR WAY, BRIDGETON, NJ 08302
PHONE : (718).338.1851 FAX : (718).228.1851
orders@ammoelectric.com

www.ammoelectric.com