



CATEGORY
**ELECTRICAL
BOXES**

AMMO ITEM #

AR805

Company: _____

Job: _____ #Item: _____

Notes: _____

4" Square Exposed Work Covers



APPLICATION

Used to support switches or receptacles in areas where the box is surface mounted or positioned in exposed work applications

FEATURES

- Crushed corners
- Two or more device attachment screws
- A lockwasher or equivalent

MATERIAL / FINISH

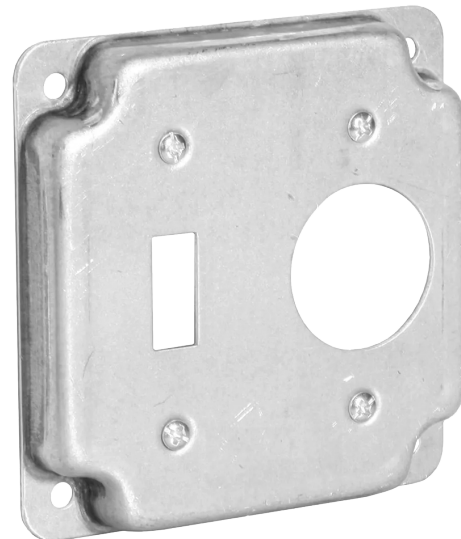
- Galvanized steel
- Silver

SPECIFICATIONS

- Height: _____ 4 in
- Length: _____ 4 in
- Raised: _____ 1/2 in
- Switch: _____ 1 toggle
- Receptacle: _____ 1 single
- Diameter: _____ 1.406 in

PACKAGING

- Weight: _____ 130 g
- PKG: _____ 50
- UPC number: _____ 837654086155



ELECTRICAL BOXES & COVERS



400 MARTIN LUTHER KING JR WAY, BRIDGETON, NJ 08302
PHONE : (718).338.1851 FAX : (718).228.1851
orders@ammoelectric.com

www.ammoelectric.com