



CATEGORY  
**ELECTRICAL  
BOXES**

AMMO ITEM #

**AR944**

Company: \_\_\_\_\_

Job: \_\_\_\_\_ #Item: \_\_\_\_\_

Notes: \_\_\_\_\_

# Gang Boxes, 2-1/2" Deep Welded with Conduit KO's, 5-Gang



## APPLICATIONS

RACO® Gang boxes are used where a number of wiring devices are to be centrally located

## PRODUCT FEATURES

- Gang boxes save time in installation, no need to gang boxes together
- Have 3/4` and 1` concentric KO's for use with a wide variety of wiring methods. Bottom KO pattern, 3-1/2` and 2-3/4` at either end of box
- Accepts two styles of covers, flat and 3/4` raised device cover
- Material: Steel

## GENERAL PRODUCT INFORMATION

Wiring System: \_\_\_\_\_ Conduit

## CONFIGURATION

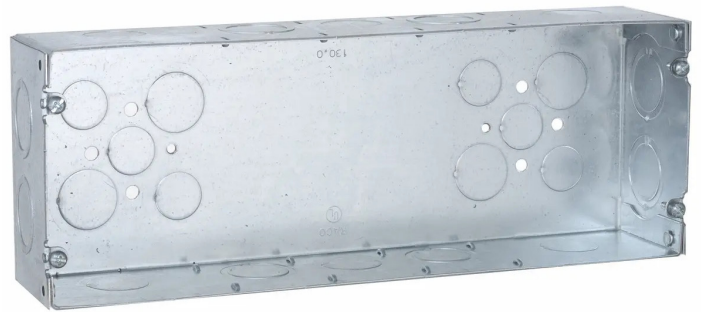
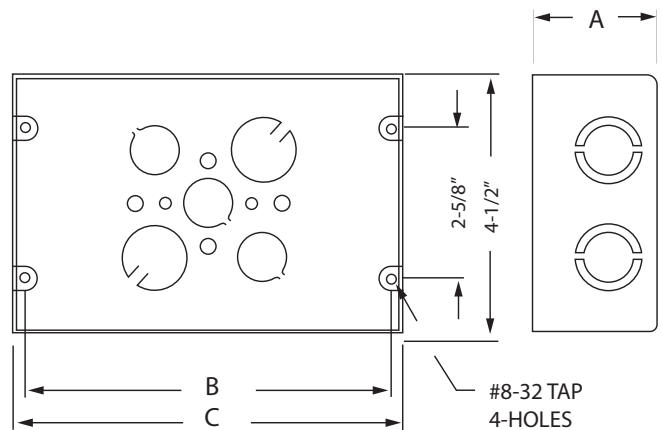
- Bottom Knockouts(s): \_\_\_\_\_ (6) 1/2, (4) 3/4 in. Concentric
- End Knockout(s): \_\_\_\_\_ 4 EKO
- Gangs: \_\_\_\_\_ 5
- Side Knockout(s): \_\_\_\_\_ (14) EKO

## DRAWING DIMENSIONS

- Dimension A: \_\_\_\_\_ 2-1/2 in.
- Dimension B: \_\_\_\_\_ 11-13/16 in.
- Dimension C: \_\_\_\_\_ 12/1/4 in.

## PRODUCT MEASUREMENTS

- Depth: \_\_\_\_\_ 2-1/2 in.
- Cubic Inches: \_\_\_\_\_ 85.5
- Wt. Ea. (Lbs.): \_\_\_\_\_ 2.559
- Product Length (in.): \_\_\_\_\_ 2.50
- Product Width (in.): \_\_\_\_\_ 4.50
- Product Height (in.): \_\_\_\_\_ 12.25



## PACKAGING

- PKG.: \_\_\_\_\_ 5
- Weight (Lbs. Per/C): \_\_\_\_\_ 255.90
- Ship Carton Length (in.): \_\_\_\_\_ 12.75
- Ship Carton Width (in.): \_\_\_\_\_ 9.50
- Ship Carton Height (in.): \_\_\_\_\_ 7.75
- Ctn Weight (Lbs.): \_\_\_\_\_ 12.80
- Pallet Qty: \_\_\_\_\_ 320
- UPC Number: \_\_\_\_\_ 837654086988

## ELECTRICAL BOXES & COVERS



400 MARTIN LUTHER KING JR WAY, BRIDGETON, NJ 08302  
PHONE : (718).338.1851 FAX : (718).228.1851  
orders@ammoelectric.com

www.ammoelectric.com