



CATEGORY
**ELECTRICAL
BOXES**

AMMO ITEM #

AR958

Company: _____

Job: _____ #Item: _____

Notes: _____

Gang Boxes, 1-5/8" Deep Welded with Conduit KO's 9-Gang



APPLICATIONS

Gang boxes are used where a number of wiring devices are to be centrally located

PRODUCT FEATURES

- Gang boxes save time in installation, no need to gang boxes together
- Have 1/2" and 3/4" concentric KO's for use with a wide variety of wiring methods Bottom KO pattern, 3-1/2" and 2-3/4" at either end of box
- Accepts two styles of covers, flat and 3/4" raised device cover.
- Material: Steel

GENERAL PRODUCT INFORMATION

Wiring System: _____ Conduit

CONFIGURATION

- Bottom Knockouts(s): _____ (15) 1/2-3/4 in. Concentric
- Back Knockout(s): _____ (4) EKO
- Gangs: _____ 9
- Side Knockout(s): _____ (22) EKO

DRAWING DIMENSIONS

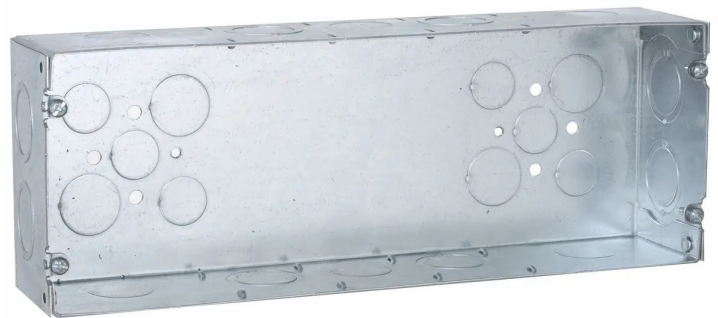
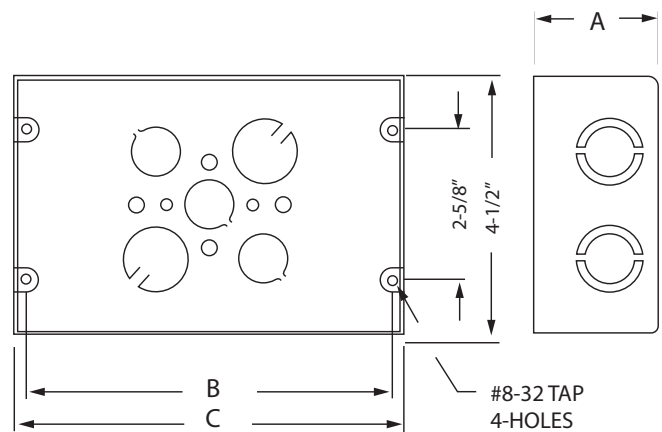
- Dimension A: _____ 1-5/8 in.
- Dimension B: _____ 19-1/16 in.
- Dimension C: _____ 19-1/2 in.

PRODUCT MEASUREMENTS

- Depth: _____ 1-5/8 in.
- Cubic Inches (cm3): _____ 137.3 (2249.9)
- Wt. Ea. (Lbs.): _____ 3.250
- Product Length (in.): _____ 1.63
- Product Width (in.): _____ 4.50
- Product Height (in.): _____ 19.50

PACKAGING

- PKG: _____ 5
- UPC Number: _____ 837654070338



ELECTRICAL BOXES & COVERS



400 MARTIN LUTHER KING JR WAY, BRIDGETON, NJ 08302
PHONE : (718).338.1851 FAX : (718).228.1851
orders@ammoelectric.com

www.ammoelectric.com