



CATEGORY  
**CONDUIT  
BODIES**

AMMO ITEM #

**ARCG-MI**

Company: \_\_\_\_\_  
Job: \_\_\_\_\_ #Item: \_\_\_\_\_  
Notes: \_\_\_\_\_

# Threaded Conduit Bodies

## Malleable Iron



### APPLICATION

To cover conduit body opening

### FEATURE

Supplied with steel captive screws

### MATERIAL

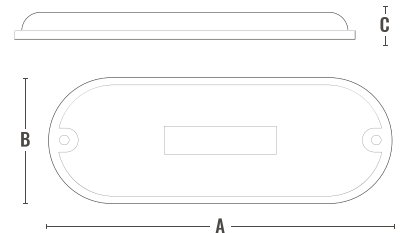
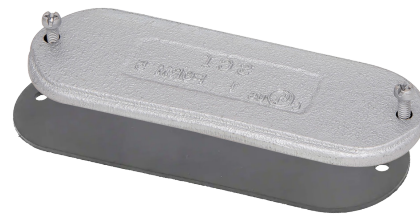
Malleable iron

### FINISH

Panton 427C

### CERTIFICATION

UL 514A



AMMO#	SIZE	A (in)	B (in)	C (in)	WEIGHT (g)	PKG	UPC
ARCG-50MI	1/2"	3.960	1.340	0.215	82	100	837654109281
ARCG-75MI	3/4"	4.670	1.580	0.228	110	100	837654109298
ARCG-100MI	1"	5.390	1.790	0.237	162	50	837654109304
ARCG-125/150MI	1-1/4"-1-1/2"	7.240	2.520	0.266	424	25	837654109311
ARCG-200MI	2"	9.490	3.150	0.335	761	25	837654109328
ARCG-250/300MI	2-1/2"-3"	12.268	4.420	1.028	1569	10	837654109335
ARCG-350/400MI	3-1/2"-4"	15.051	5.450	1.106	2215	10	837654109342

## CONDUIT BODIES



400 MARTIN LUTHER KING JR WAY, BRIDGETON, NJ 08302  
PHONE : (718).338.1851 FAX : (718).228.1851  
orders@ammoelectric.com

www.ammoelectric.com