



CATEGORY

**NEC (Nipples,  
Elbows & Couplings)**

AMMO ITEM #

**ARRE-30**

Company: \_\_\_\_\_

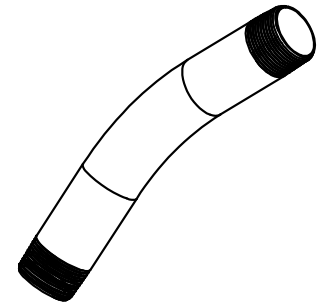
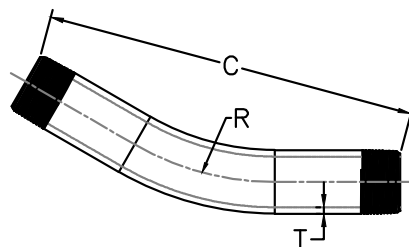
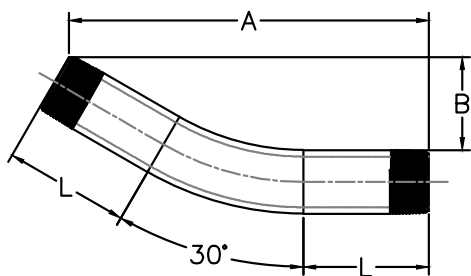
Job: \_\_\_\_\_ #Item: \_\_\_\_\_

Notes: \_\_\_\_\_

## Rigid 30° Standard Elbows



AMMO#	SIZE	A	B	C	OD (in)	THICKNESS T (in)	STRAIGHT LENGTH L (in)	RADIUS R (in)	WEIGHT (g)	PKG	UPC
ARRE-12530	1-1/4"	9.243	2.477	9.569	1.660	0.134	3.233	7.25	815	20	837654090626
ARRE-15030	1-1/2"	10.04	2.691	10.395	1.900	0.138	3.425	8.25	1125	15	837654090633
ARRE-20030	2"	12.163	3.26	12.593	2.375	0.146	4.291	9.5	1785	10	837654090640
ARRE-25030	2-1/2"	14.522	3.891	15.034	2.875	0.193	5.354	10.5	3194	50	837654090657
ARRE-30030	3"	17.784	4.765	18.411	3.500	0.205	6.516	13	4692	35	837654090664
ARRE-35030	3-1/2"	19.431	5.207	20.117	4.000	0.217	6.93	15	6797	35	83765409067
ARRE-40030	4"	20.099	5.386	20.809	4.500	0.224	7.087	16	8477	35	837654090688



### FEATURES

- Low conductivity, high corrosion resistance
- Smooth defect free interior and exterior Hot-dip galvanized for excellent corrosion resistance
- High strength ductile steel for long life and easy bending
- Smooth, continuous raceways for fast wire-pulling
- Kwik-Release End Cap to protect threads
- It complies with ANSI C80.1/UL6 standards

### MATERIAL

Galvanized steel

### FINISH

Hot dip galvanized

### APPLICATIONS

- For a secure connection to Rigid conduit; bend enables directional changes in conduit
- Used to connect Rigid or IMC conduit together to allow for bends

## NEC (Nipples, Elbows & Couplings)



400 MARTIN LUTHER KING JR WAY, BRIDGETON, NJ 08302  
PHONE : (718).338.1851 FAX : (718).228.1851  
orders@ammoelectric.com

www.ammoelectric.com