



CATEGORY
**ELECTRICAL
FITTINGS**
AMMO ITEM #
ARSCCTF

Company: _____
Job: _____ #Item: _____
Notes: _____

Screw in Coupling EMT Compression



APPLICATION

Intended to use with Steel Flexible metal conduit to Steel EMT

FEATURE

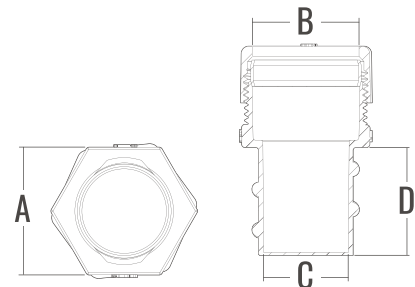
Compress Type

MATERIAL

- Body: die cast zinc
- Compression Nut: die-cast zinc
- Locking Ring: zinc plated steel

CERTIFICATIONS

- UL Standard: 514B
- CSA-C22.2 No. 18.3-12



AMMO#	SIZE	WEIGHT (g)	A (in)	B (in)	C (in)	D (in)	INNER	MASTER	UPC
ARSCCTF-50	1/2"	28	0.905	0.716	0.56	0.80	25	250	837654109359
ARSCCTF-75	3/4"	43	1.12	0.933	0.74	0.944	10	100	837654109366
ARSCCTF-100	1"	54	1.358	1.18	0.925	1.023	5	50	837654109373

ELECTRICAL FITTINGS



400 MARTIN LUTHER KING JR WAY, BRIDGETON, NJ 08302
PHONE : (718).338.1851 FAX : (718).228.1851
orders@ammoelectric.com

www.ammoelectric.com