



CATEGORY

**ELECTRICAL
BOXES**

AMMO ITEM #

AR121ADJ

Company: _____

Job: _____ #Item: _____

Notes: _____

ADJ Outlet Box



Intertek

APPLICATIONS

- Adjustability for different wall thickness with the simple turn of a screw has made the Adjust-A-Box line a favorite of electrical installers everywhere
- The latest addition to the Adjust-A-Box family puts a new twist on an old favorite with its horizontal orientation, perfect for mounting kitchen and baseboard receptacles
- The single-gang, large-capacity, non-metallic box features a metal bracket for horizontal mounting that clips onto any standard wood or metal stud
- The box mounts squarely and securely without screws or nails, but mounting holes are provided for non-standard studs or where more secure mounting is required

FEATURES

- Ideal for new work or retrofit (old work) applications
- Backless low voltage bracket and floor box designs available
- Ideal for various drywall thicknesses and wall finishes
- PVC construction for easier installation, greater performance and lower installation cost
- Adjustment from 0 in. to 1-3/4 in. after installation

MATERIALS

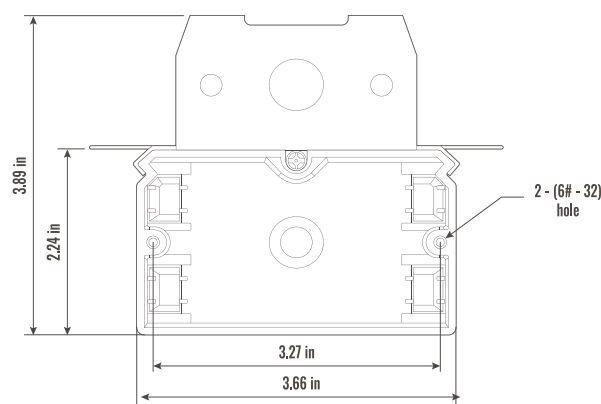
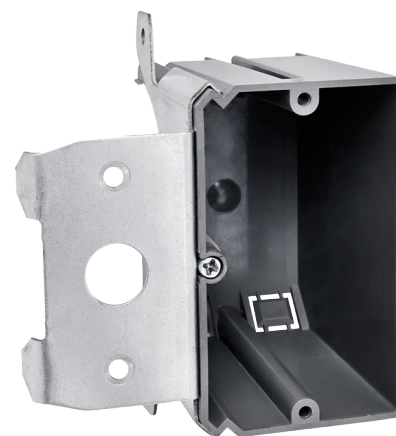
- Plastic box: PVC gray
- Fix plate: galvanized sheet
- Screw: carbon steel, white zinc

DIMENSIONS

- Cubic capacity: _____ 21 cu in
- Mounting means up: _____ 1-3/4 in adjustable bracket
- Depth: _____ 3.32 in
- Gangs: _____ 1

PACKAGING

- Weight: _____ 184 g
- Inner: _____ 1
- Master: _____ 50
- UPC number: _____ 837654124604



ELECTRICAL BOXES & COVERS



Ammo Electric Inc.

400 MARTIN LUTHER KING JR WAY, BRIDGETON, NJ 08302

PHONE : (718).338.1851 FAX : (718).228.1851

orders@ammoelectric.com

www.ammoelectric.com