



CATEGORY

WIRING
DEVICES

AMMO ITEM #

303P4WSF

Company: _____

Job: _____ #Item: _____

Notes: _____

Industrial Receptacle



APPLICATIONS

- New or renovated single- and multi-family housing, schools, libraries, childcare and healthcare facilities
- Guest rooms and guest suites

FEATURES

- Made of durable thermoplastic
- Heavy-gauge, double-wipe copper alloy contacts
- Easy-to-wire terminals accept up to No. 4 AWG conductors
- Terminals marked for easy identification and fast wiring
- All mounting hardware included
- Flush-mount devices fit single or two-gang outlet boxes
- Limited Two-Year Warranty

MATERIAL

- Face Material: _____ Thermoplastic PA
- Body Material: _____ Thermoplastic PA

MATERIAL CHARACTERISTIC

- Environmental: Flammability, UL-94, Rated V0
- Operating Temperature: -31°F to 149°F (-35° C to 65°C)

SPECIFICATIONS

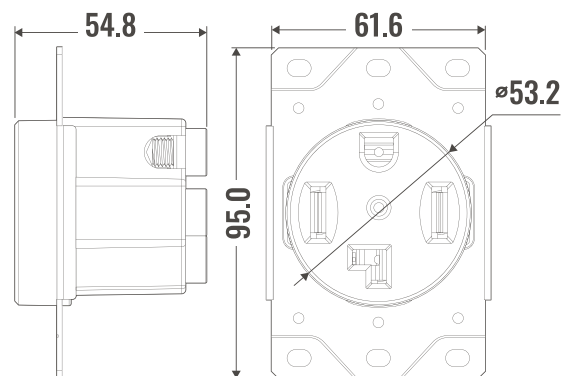
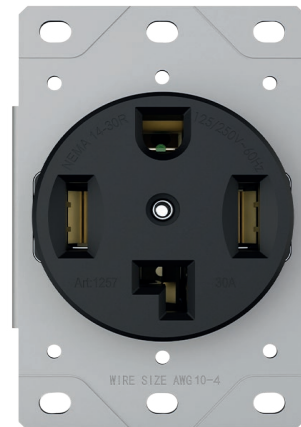
- Color: _____ Black
- Rating: _____ 30A, 125/250VAC
- NEMA: _____ 14-30R
- Pole: _____ 3
- Wire: _____ 4
- Termination: _____ Back
- Dielectric Voltage: _____ Withstands 2000V per UL498

CERTIFICATION

- UL 498
- RoHS

PACKAGING

- Weight: _____ 0.64 lb
- Inner: _____ 10
- Master: _____ 100
- UPC Number: _____ 837654125847



MEASURES in mm

WIRING & DEVICES



Ammo Electric Inc.

1000 COMMERCE CENTER DR ELKTON MD 21921

PHONE : (718).338.1851 FAX : (718).228.1851

orders@ammoelectric.com

www.ammoelectric.com