



CATEGORY

ELECTRICAL  
BOXES

AMMO ITEM #

AR943

Company: \_\_\_\_\_

Job: \_\_\_\_\_ #Item: \_\_\_\_\_

Notes: \_\_\_\_\_

## Four Gang Box, Welded, 2-1/2" Deep Eight 3/4" & 1" Concentric KO's, Six 1/2" KO's



### APPLICATION

Used where a number of wiring devices are to be centrally located

### FEATURES

- Gang boxes save time in installation, no need to gang boxes together
- Bottom KO pattern, 6-1/2' and 4-3/4' at either end of box
- Accepts two styles of covers, flat and 3/4' raised device cover

### MATERIAL

Steel

### CONFIGURATION

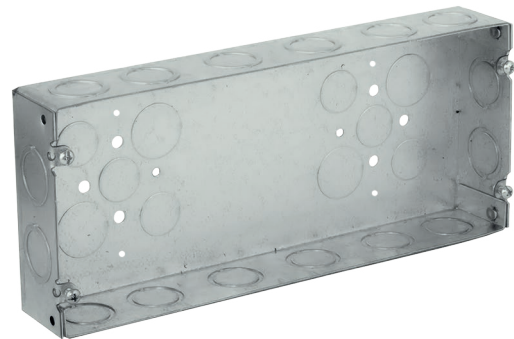
- Knockouts: \_\_\_\_\_ Six 1/2 in & four 3/4 in
- Concentric Knockout: \_\_\_\_\_ Sixteen 1/2 in & 3/4 in
- Gangs: \_\_\_\_\_ 4
- Drawn or Welded: \_\_\_\_\_ Welded
- Wiring System: \_\_\_\_\_ Conduit
- Cubic Capacity: \_\_\_\_\_ 72.8 cu. in

### MEASUREMENT

- Depth: \_\_\_\_\_ 2-1/2 in
- Length: \_\_\_\_\_ 2.50 in
- Width: \_\_\_\_\_ 4.50 in
- Height: \_\_\_\_\_ 10.44 in

### PACKAGING

- Weight: \_\_\_\_\_ 2.31 lb
- PKG: \_\_\_\_\_ 5
- UPC Number: \_\_\_\_\_ 840526201983



## ELECTRICAL BOXES & COVERS



Ammo Electric Inc.

1000 COMMERCE CENTER DR ELKTON MD 21921

PHONE : (718).338.1851 FAX : (718).228.1851

orders@ammoelectric.com

www.ammoelectric.com