



CATEGORY
**ELECTRICAL
BOXES**
AMMO ITEM #
AR952

Company: _____

Job: _____ #Item: _____

Notes: _____

Three Gang Multigang Welded, Switch box, 1-5/8" Deep



APPLICATION

Used where a number of wiring devices are to be centrally located

FEATURES

- Gang boxes save time in installation, no need to gang boxes together. Have 1/2" and 3/4" concentric KO's for use with a wide variety of wiring methods
- Bottom KO pattern, 3-1/2" and 2-3/4" at either end of box
- Accepts two styles of covers, flat and 3/4" raised device cover
- Use low voltage partitions #947 or #949

MATERIAL

Steel

CONFIGURATION

- Top & Bottom Knockouts(s): _____ Ten 1/2 - 3/4 in Concentric
- Back Knockout(s): _____ Six 1/2 in & Four 3/4 in
- Gangs: _____ 3
- Wiring System: _____ Conduit
- Side Knockout(s): _____ Four 1/2-3/4 in Concentric
- Cubic Capacity: _____ 60.0 cu in
- Drawn or welded: _____ Welded

DRAWING DIMENSIONS

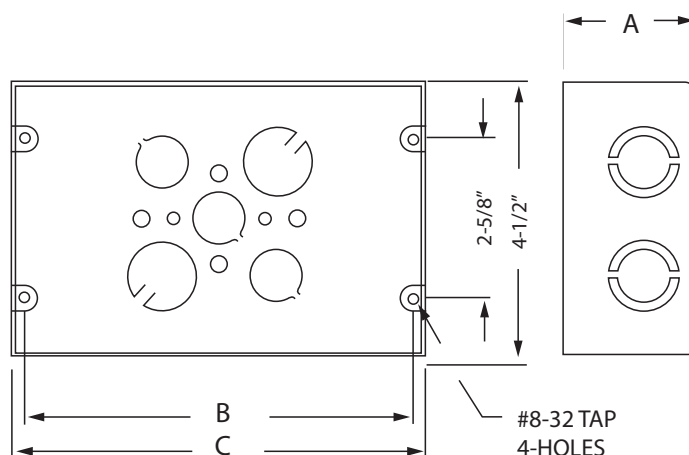
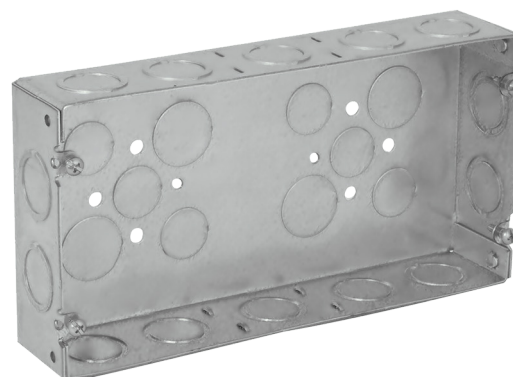
- Dimension A: _____ 1-5/8 in
- Dimension B: _____ 8-13/16 in
- Dimension C: _____ 8-5/8 in

MEASUREMENTS

- Depth: _____ 1-5/8 in
- Length: _____ 1.63 in
- Width: _____ 4.50 in
- Height: _____ 8.63 in

PACKAGING

- Weight: _____ 1.15 lb
- PKG: _____ 5
- UPC number: _____ 840526201891



ELECTRICAL BOXES & COVERS



1000 COMMERCE CENTER DR ELKTON MD 21921
PHONE : (718).338.1851 FAX : (718).228.1851
orders@ammoelectric.com

www.ammoelectric.com